



Thank you for your recent PENN gear purchase. No matter where you fish or what you fish for, you can depend PENN to perform in any battle day in and day out. Now it's time to get your product registered and get out on the water.

<https://register.pennfishing.com>

KEY NO.	PART NO.	PENN STYLE NO.	DESCRIPTION
1	1618577	1-SSVII4500EU	Housing Assembly
1E	1489173	1E-SSVI3500	Housing Slope
1F	1489174	1F-SSVI3500	Main Gear Seal Ring (2 req)
1G	1489175	1G-SSVI3500	Seal Plate (2 req)
1H	1489176	1H-SSVI3500	Bearing Screw(6 req)
1J	1489177	1J-SSVI3500	Housing Slope Screw
2L	1489178	2L-SSVI3500	Housing Seal Ring
3	1612316	8-SSVII2500	Main Gear
3A	1191028	8A-3000SG	Shim
13	1489180	13-SSVI3500	Click Ratchet
15	1489181	15-SSVI3500	Handle Assembly
19	1612343	19-SSVII3500	Pinion Gear
19A	1191252	19A-3000SG	Pinion Bushing
20A	1308050	20-CFT3000	Ball Bearing (3 req)
20B	1308051	20A-CFT3000	Upper Pinion Ball Bearing
21	1489183	21-SSVI3500	Bearing Retainer
21A	1489184	21A-SSVI3500	Bearing Retainer Screw (3 req)
21B	1489185	21B-SSVI3500	Collar
21C	1489186	21C-SSVI3500	Bearing Retainer O Ring
22	1203997	43B-3000PUR	Bail Pivot Cover Screw
24	1489234	24-SSVI4500	Bail Wire
25	1489188	25-SSVI3500	Bail Holder
25C	1489189	25C-SSVI3500	Bushing (2 req)
27A	1489235	27A-SSVI4500	Bail Pivot Cover
27H	1489236	27H-SSVI4500	Rotor Assembly
28	1489237	28-SSVI4500	Trip Lever

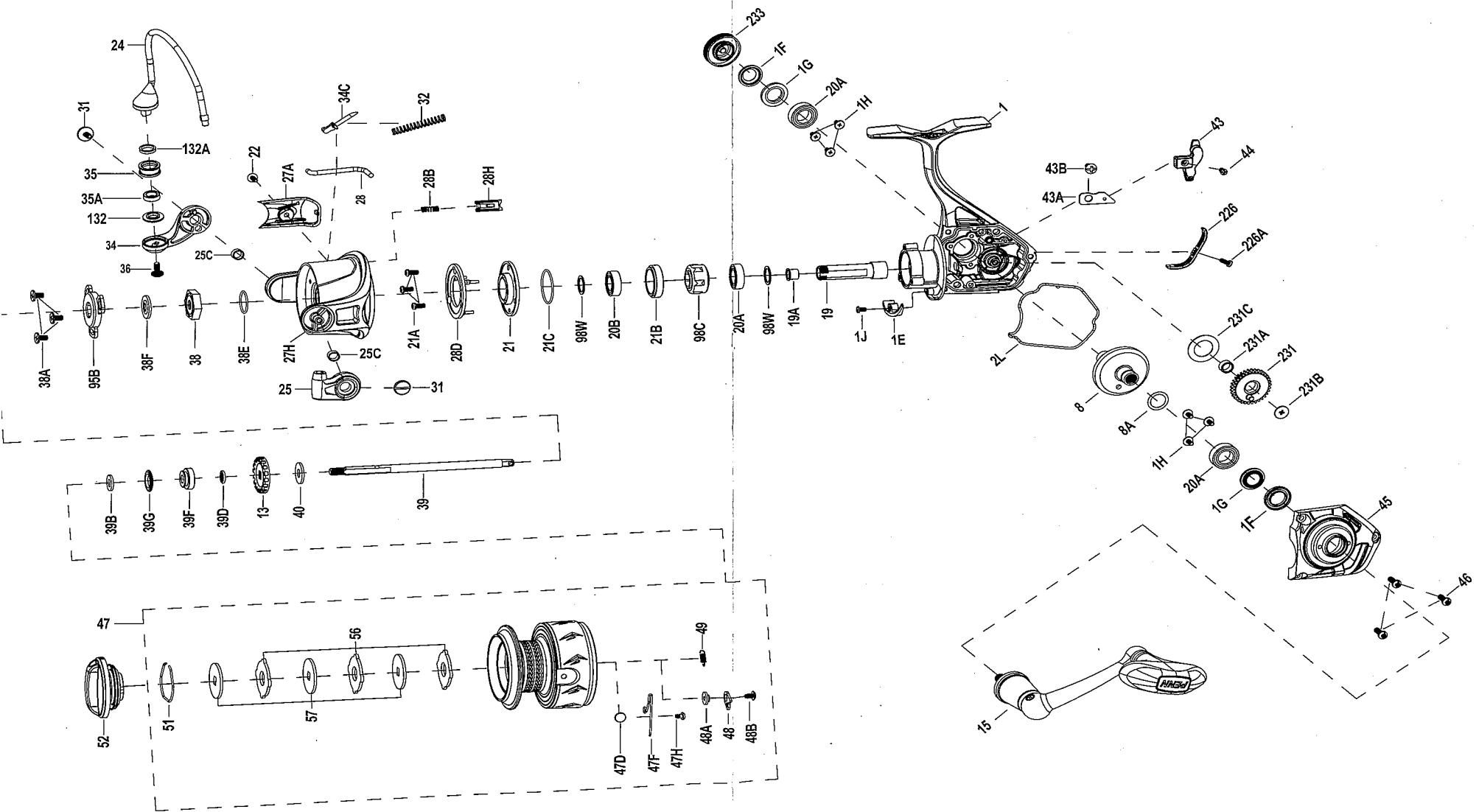
KEY NO.	PART NO.	PENN STYLE NO.	DESCRIPTION
28B	1489193	28B-SSVI3500	Rotor Brake Spring
28D	1489194	28H-SSVI3500	Rotor Brake
28H	1489195	28D-SSVI3500	Rotor Brake
31	1489196	31-SSVI3500	Bail Arm Screw (2 req)
32	1191583	32-2000SG	Bail Spring
34	1489197	34-SSVI3500	Bail Arm
34C	1489198	34C-SSVI3500	Pivot Arm
35	1489199	35-SSVI3500	Line Roller
35A	1489200	35A-SSVI3500	Roller Bearing
36	1191699	36-3000SG	Bail Stud Screw
38	1489201	38-SSVI3500	Rotor Nut
38A	1308069	38A-CFT3000	Rotor Nut Cover Screw (3 req)
38E	1489203	38E-SSVI3500	Rotor O Ring
38F	1489204	38F-SSVI3500	Main Shaft Seal Ring
39	1489238	39-SSVI4500	Main Shaft
39B	1489206	39B-SSVI3500	Thrust Washer
39D	1489207	39D-SSVI3500	Spool Bushing Seal Ring
39F	1489208	39F-SSVI3500	Spool Bushing
39G	1489209	39G-SSVI3500	Spool Seal Ring
40	1489210	40-SSVI3500	Main Shaft Washer
43	1489211	43-SSVI3500	Crosswind Block
43A	1489212	43A-SSVI3500	Crosswind Block Plate
43B	1489213	43B-SSVI3500	Crosswind Block Plate Screw
44	1489214	44-SSVI3500	Crosswind Block Screw
45	1489239	45-SSVI4500	Housing Cover Assembly

KEY NO.	PART NO.	PENN STYLE NO.	DESCRIPTION
46	1192645	21A-5000SG	Bearing Retainer Screw (3 req)
47	1618578	47-SSVII4500EU	Spool Assembly
47D	1489217	47D-SSVI3500	Line Clip
47F	1489218	47F-SSVI3500	Line Clip Spring
47H	1489219	47H-SSVI3500	Line Clip Spring Screw
48	1211604	48-3000SG	Click Tongue
48A	1214226	48A-3000SG	Click Tongue Washer
48B	1489220	48B-SSVI3500	Spool Click Screw
49	1211605	49-3000SG	Click Tongue Spring
51	1308078	51-CFT3000	Drag Retaining Ring
52	1489221	52-SSVI3500	Drag Knob Assembly
56	1308080	56-CFT3000	Drag Washer (3 req)
57	1489222	57-SSVI3500	Keyed Washer (3 req)
95B	1489223	95B-SSVI3500	Rotor Nut Cover
98C	1308082	98C-CFT3000	Clutch/Sleeve Assembly
98W	1204004	98W-3000PUR	Clutch Washer (2 req)
132	1489224	132-SSVI3500	Roller Washer
132A	1489225	132A-SSVI3500	Line Roller Bushing
226	1489226	226-SSVI3500	Rear Cover
226A	1489227	226A-SSVI3500	Rear Cover Screw
231	1489241	231-SSVI4500	Crosswind Gear
231A	1489229	231A-SSVI3500	Crosswind Gear Bushing
231B	1489230	231B-SSVI3500	Crosswind Gear Screw
231C	1489231	231C-SSVI3500	Crosswind Gear Washer
233	1547218	233-SSVI3500	Bearing Cover Assembly

WARNING: Cancer and Reproductive Harm – www.P65Warnings.ca.gov



SSVII4500EU
EXPLODED DRAWING





Thank you for your recent PENN gear purchase. No matter where you fish or what you fish for, you can depend PENN to perform in any battle day in and day out. Now it's time to get your product registered and get out on the water.

<https://register.pennfishing.com>

KEY NO.	PART NO.	PENN STYLE NO.	DESCRIPTION
	1618575	1-SSVII3500EU	Housing Assembly
E	1489173	1E-SSVI3500	Housing Slope
F	1489174	1F-SSVI3500	Main Gear Seal Ring (2 req)
G	1489175	1G-SSVI3500	Seal Plate (2 req)
H	1489176	1H-SSVI3500	Bearing Screw(6 req)
J	1489177	1J-SSVI3500	Housing Slope Screw
L	1489178	2L-SSVI3500	Housing Seal Ring
I	1612316	8-SSVII2500	Main Gear
IA	1191028	8A-3000SG	Shim
3	1489180	13-SSVI3500	Click Ratchet
5	1489181	15-SSVI3500	Handle Assembly
9	1612343	19-SSVII3500	Pinion Gear
9A	1191252	19A-3000SG	Pinion Bushing
0A	1308050	20-CFT3000	Ball Bearing (3 req)
0B	1308051	20A-CFT3000	Ball Bearing
1	1489183	21-SSVI3500	Bearing Retainer
1A	1489184	21A-SSVI3500	Bearing Retainer Screw (3 req)
1B	1489185	21B-SSVI3500	Collar
1C	1489186	21C-SSVI3500	Bearing Retainer O Ring
2	1203997	43B-3000PUR	Bail Pivot Cover Screw
4	1489187	24-SSVI3500	Bail Wire
5	1489188	25-SSVI3500	Bail Holder
5C	1489189	25C-SSVI3500	Bushing (2 req)
7A	1489190	27A-SSVI3500	Bail Pivot Cover
7H	1489191	27H-SSVI3500	Rotor Assembly
8	1489192	28-SSVI3500	Trip Lever

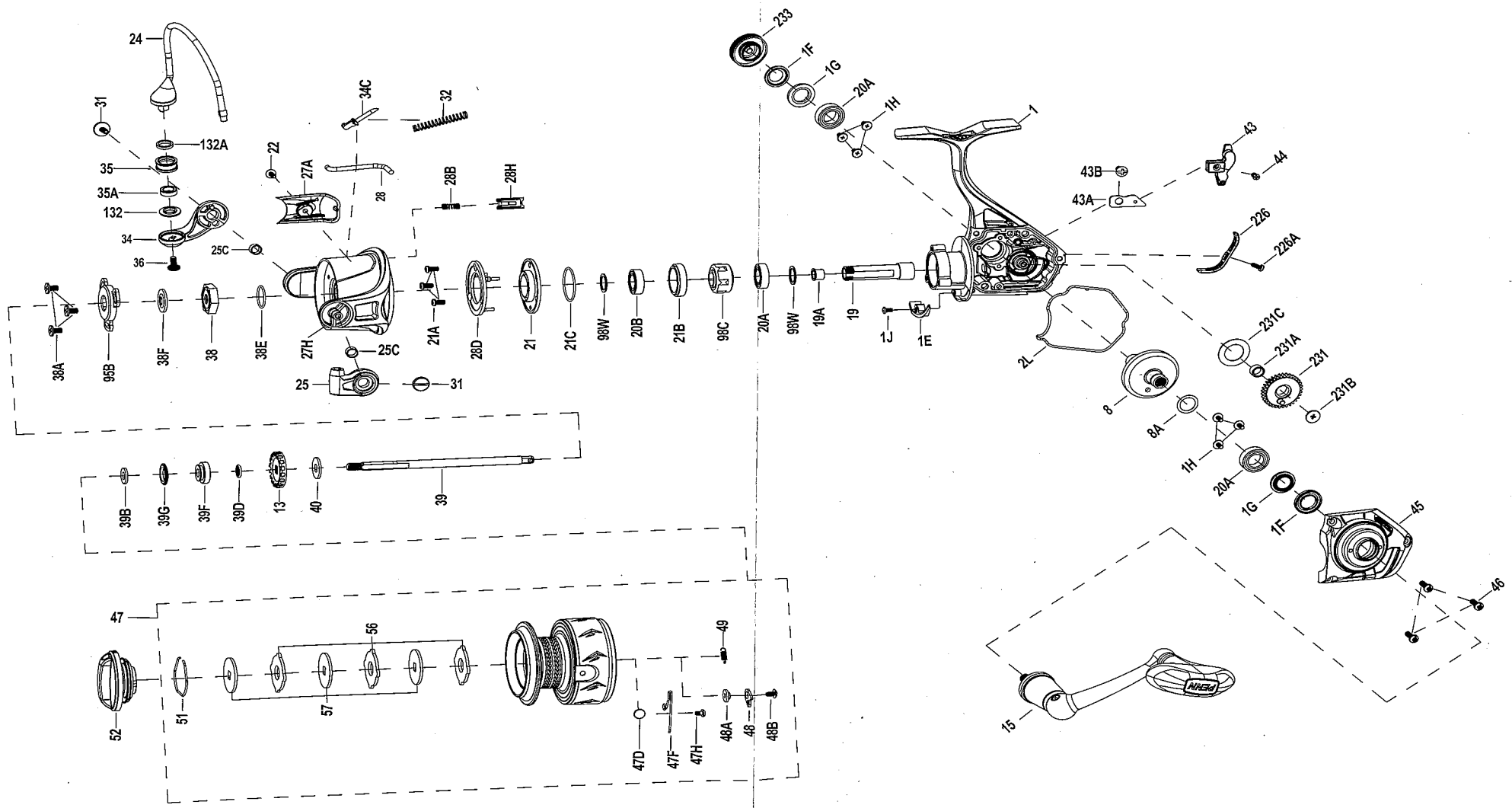
KEY NO.	PART NO.	PENN STYLE NO.	DESCRIPTION
28B	1489193	28B-SSVI3500	Rotor Brake Spring
28D	1489194	28H-SSVI3500	Rotor Brake
28H	1489195	28D-SSVI3500	Rotor Brake
31	1489196	31-SSVI3500	Bail Arm Screw (2 req)
32	1191583	32-2000SG	Bail Spring
34	1489197	34-SSVI3500	Bail Arm
34C	1489198	34C-SSVI3500	Pivot Arm
35	1489199	35-SSVI3500	Line Roller
35A	1489200	35A-SSVI3500	Roller Bearing
36	1191699	36-3000SG	Bail Stud Screw
38	1489201	38-SSVI3500	Rotor Nut
38A	1308069	38A-CFT3000	Rotor Nut Cover Screw (3 req)
38E	1489203	38E-SSVI3500	Rotor O Ring
38F	1489204	38F-SSVI3500	Main Shaft Seal Ring
39	1489205	39-SSVI3500	Main Shaft
39B	1489206	39B-SSVI3500	Thrust Washer
39D	1489207	39D-SSVI3500	Spool Bushing Seal Ring
39F	1489208	39F-SSVI3500	Spool Bushing
39G	1489209	39G-SSVI3500	Spool Seal Ring
40	1489210	40-SSVI3500	Main Shaft Washer
43	1489211	43-SSVI3500	Crosswind Block
43A	1489212	43A-SSVI3500	Crosswind Block Plate
43B	1489213	43B-SSVI3500	Crosswind Block Plate Screw
44	1489214	44-SSVI3500	Crosswind Block Screw
45	1489215	45-SSVI3500	Housing Cover Assembly

KEY NO.	PART NO.	PENN STYLE NO.	DESCRIPTION
46	1192645	21A-5000SG	Housing Cover Screw (3 req)
47	1618576	47-SSVII3500EU	Spool Assembly
47D	1489217	47D-SSVI3500	Line Clip
47F	1489218	47F-SSVI3500	Line Clip Spring
47H	1489219	47H-SSVI3500	Line Clip Spring Screw
48	1211604	48-3000SG	Click Tongue
48A	1214226	48A-3000SG	Click Tongue Washer
48B	1489220	48B-SSVI3500	Spool Click Screw
49	1211605	49-3000SG	Click Tongue Spring
51	1308078	51-CFT3000	Drag Retaining Ring
52	1489221	52-SSVI3500	Drag Knob Assembly
56	1308080	56-CFT3000	Drag Washer (3 req)
57	1489222	57-SSVI3500	Keyed Washer (3 req)
95B	1489223	95B-SSVI3500	Rotor Nut Cover
98C	1308082	98C-CFT3000	Clutch/Sleeve Assembly
98W	1204004	98W-3000PUR	Clutch Washer (2 req)
132	1489224	132-SSVI3500	Roller Washer
132A	1489225	132A-SSVI3500	Line Roller Bushing
226	1489226	226-SSVI3500	Rear Cover
226A	1489227	226A-SSVI3500	Rear Cover Screw
231	1489228	231-SSVI3500	Crosswind Gear
231A	1489229	231A-SSVI3500	Crosswind Gear Bushing
231B	1489230	231B-SSVI3500	Crosswind Gear Screw
231C	1489231	231C-SSVI3500	Crosswind Gear Washer
233	1547218	233-SSVI3500	Bearing Cover Assembly

WARNING: Cancer and Reproductive Harm – www.P65Warnings.ca.gov



SSVII3500EU
EXPLODED DRAWING





Thank you for your recent PENN gear purchase. No matter where you fish or what you fish for, you can depend PENN to perform in any battle day in and day out. Now it's time to get your product registered and get out on the water.

<https://register.pennfishing.com>

EY NO.	PART NO.	PENN STYLE NO.	DESCRIPTION
	1618581	1-SSVII6500EU	Housing Assembly
F	1489419	1F-SSVI5500	Main Gear Seal Ring(2 req)
G	1489418	1G-SSVI5500	Seal Plate(2 req)
H	1489176	1H-SSVI3500	Bearing Screw (6 req)
L	1489447	2L-SSVI6500	Housing Seal Ring
	1489448	4-SSVI6500	A/R Pawl
	1489422	5-SSVI5500	Pawl Spring
	1190979	6-5000SG	Retaining Clip
	1489449	8-SSVI6500	Main Gear
A	1485572	8B-PURIII5000	Shim
0	1489450	10-SSVI6500	A/R Holder
1	1489425	11-SSVI5500	Bushing
2	1489426	12-SSVI5500	Bushing Spring
5	1489427	15-SSVI5500	Handle Assembly
9	1489428	19-SSVI5500	Pinion Gear
9A	1489429	19A-SSVI5500	Pinion Bushing
0	1308090	20-CFT5000	Ball Bearing (4 req)
1	1489451	21-SSVI6500	Bearing Retainer
1A	1192645	21A-5000SG	Bearing Retainer Screw(3 req)
1B	1489431	21B-SSVI5500	Collar
1C	1489303	21C-SSVI7500	Bearing Retainer O-Ring
4	1489452	24-SSVI6500	Bail Wire
5	1489433	25-SSVI6500	Bail Holder
7	1489434	27-SSVI6500	Rotor

KEY NO.	PART NO.	PENN STYLE NO.	DESCRIPTION
27A	1489435	27A-SSVI6500	Bail Pivot Cover
28	1489436	28-SSVI6500	Trip Lever
28D	1489437	28D-SSVI6500	Rotor Brake
31	1489310	31-SSVI7500	Bail Arm Screw (2 req)
32	1489397	32-SSVI5500	Bail Spring
34	1489438	34-SSVI6500	Bail Arm
34C	1489399	34C-SSVI5500	Pivot Arm
35	1489400	35-SSVI5500	Line Roller
35A	1242222	35A-5000BTL	Line Roller Bearing
36	1191699	36-3000SG	Bail Stud Screw
38	1489401	38-SSVI5500	Rotor Nut
38A	1489316	38A-SSVI7500	Rotor Nut Cover Screw(3 req)
38E	1489203	38E-SSVI3500	Rotor O-Ring(2 req)
38F	1489402	38F-SSVI5500	Main Shaft Seal Ring
39	1489439	39-SSVI6500	Main Shaft Assembly
39A	1489320	39A-SSVI7500	Thrust Washer
39B	1489321	39B-SSVI7500	Spool Seal
43	1489440	43-SSVI6500	Crosswind Block
43A	1489405	43A-SSVI5500	Crosswind Block Plate
43B	1489213	43B-SSVI3500	Plate Screw (6 req)
44	1191845	44-5000SG	Crosswind Block Screw (2 req)
45	1489441	45-SSVI6500	Housing Cover Assembly
46	1618590	46-SSVII5500EU	Housing Cover Screw (3 req)

KEY NO.	PART NO.	PENN STYLE NO.	DESCRIPTION
47	1618582	47-SSVII6500EU	Spool Assembly
47D	1489408	47D-SSVI5500	Line Clip
47F	1489218	47F-SSVI3500	Line Clip Spring
47H	1489219	47H-SSVI3500	Line Clip Spring Screw
48	1211625	48-5000SG	Click Tongue
48A	1211626	48A-5000SG	Click Tongue Washer
48B	1489327	48B-SSVI7500	Spool Click Screw
49	1211627	49-5000SG	Click Tongue Spring
51	1308112	51-CFT5000	Drag Retaining Ring
52	1489409	52-SSVI5500	Drag Knob Assembly
56	1308114	56-CFT5000	Drag Washer (3 req)
57	1192044	57-5000SG	Keyed Washer (3 req)
95B	1489223	95B-SSVI3500	Rotor Locking Plate
98C	1308116	98C-CFT5000	Clutch/Sleeve Assembly
132	1489410	132-SSVI5500	Roller Washer
132A	1489411	132A-SSVI5500	Line Roller Bushing
226	1489443	226-SSVI6500	Rear Cover
226A	1489227	226A-SSVI3500	Rear Cover Screw
231	1489444	231-SSVI6500	Crosswind Gear
231A	1489445	231A-SSVI6500	Crosswind Gear Washer
231B	1489338	231B-SSVI7500	Crosswind Gear Screw
231C	1489339	231C-SSVI7500	Crosswind Gear Sleeve
233	1547219	233-SSVI5500	Bearing Cover Assembly

WARNING: Cancer and Reproductive Harm – www.P65Warnings.ca.gov